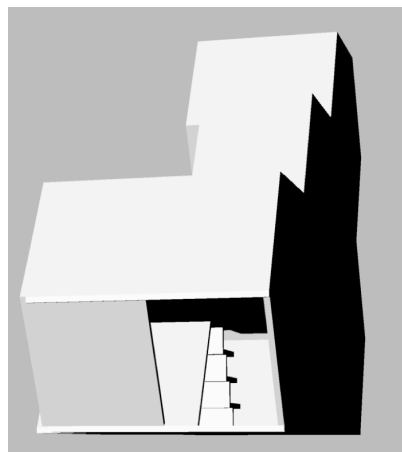
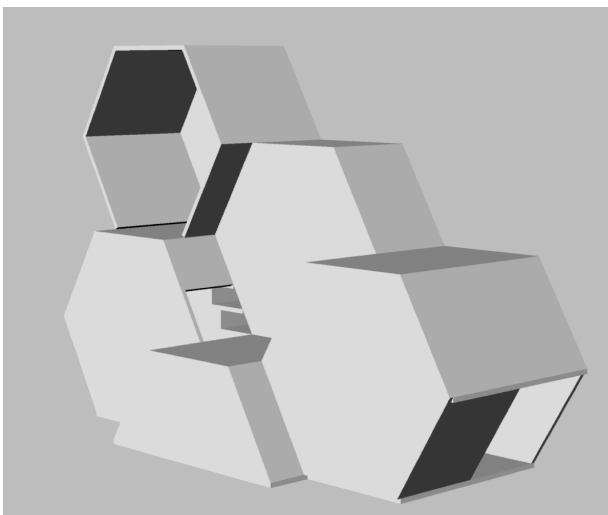
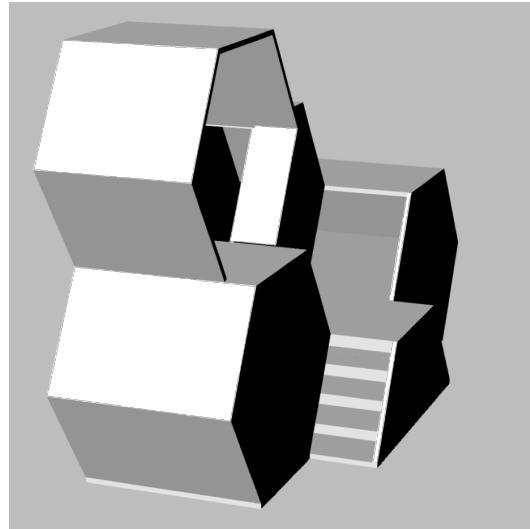
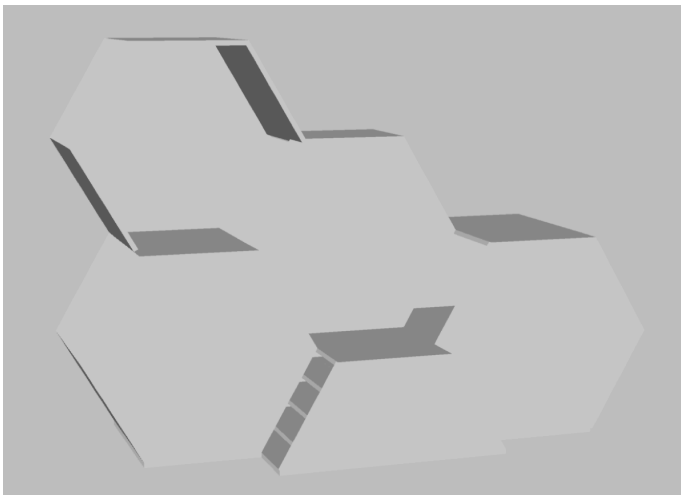
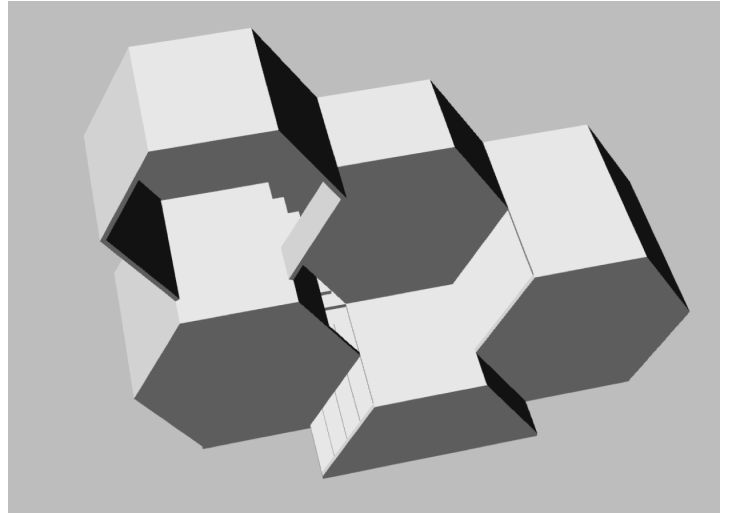
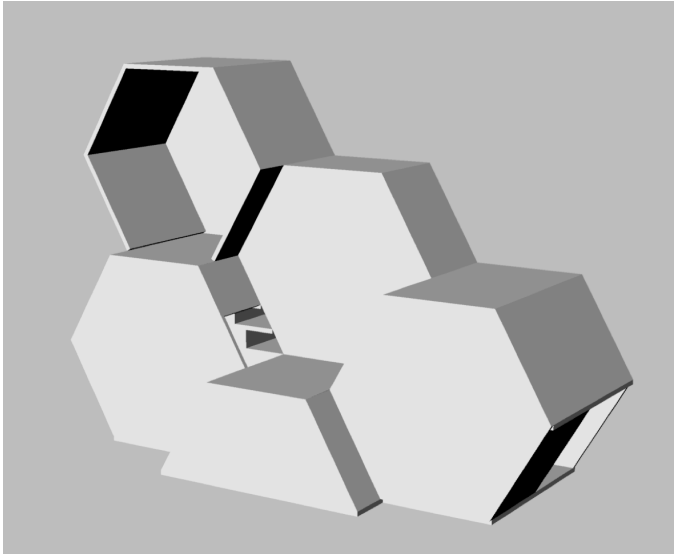
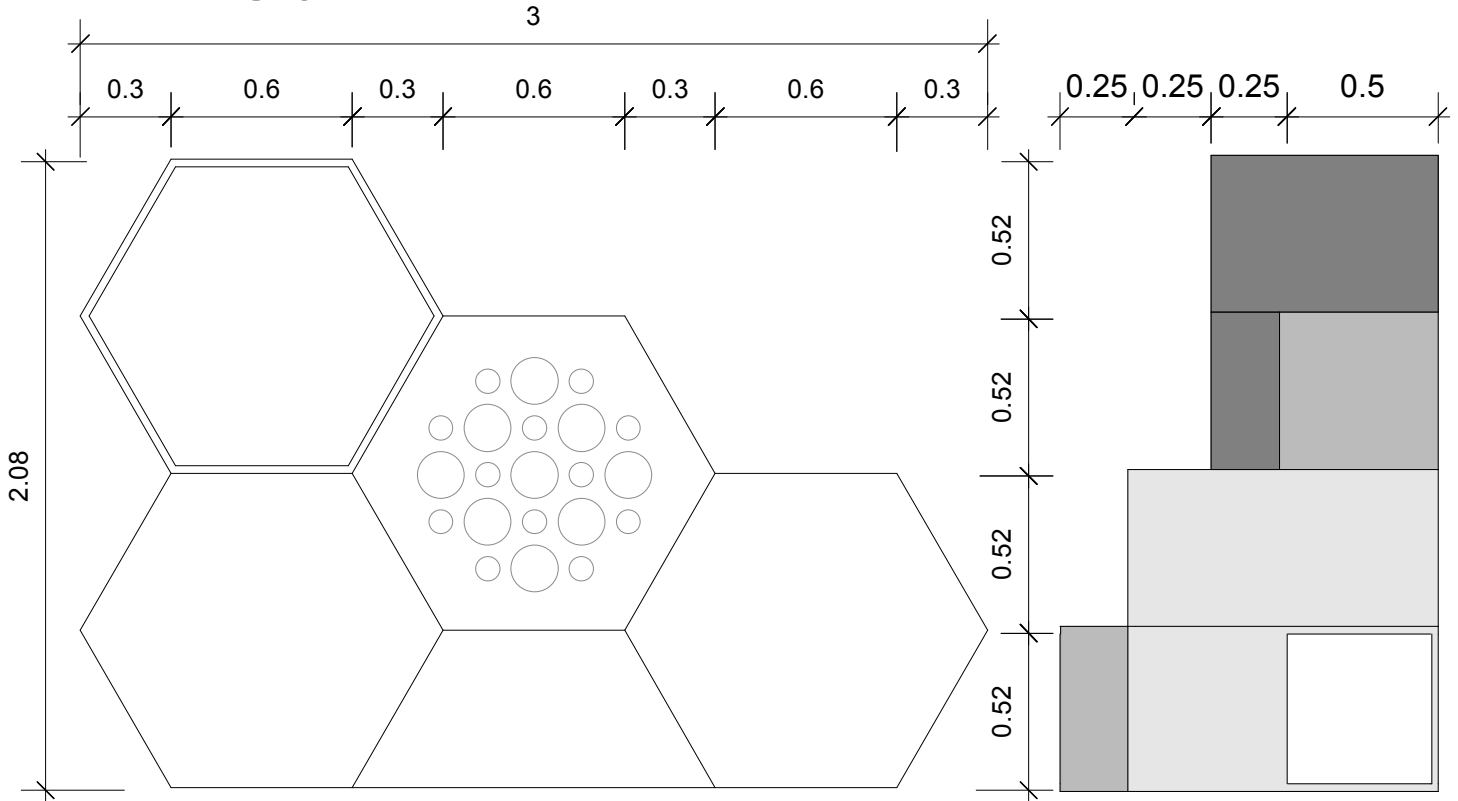


JUEGOS HEXAGONALES PARA NIÑOS

VISTAS

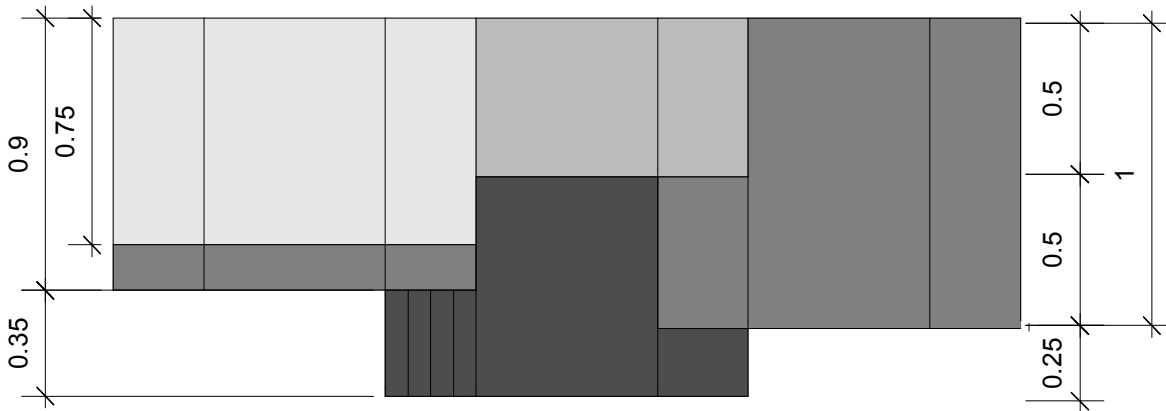


PLANOS



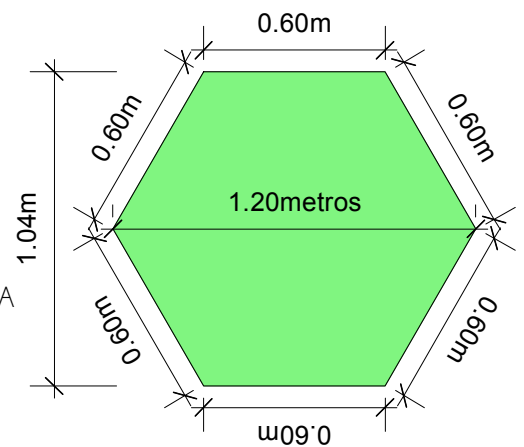
ELEVACIÓN FRONTAL
ESCALA 1:25

ELEVACIÓN DERECHA
ESCALA 1:25

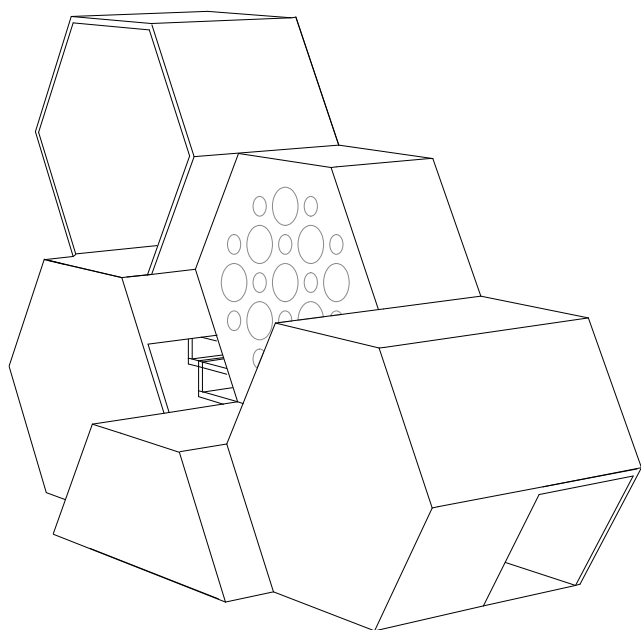


PLANTA
ESCALA 1:25

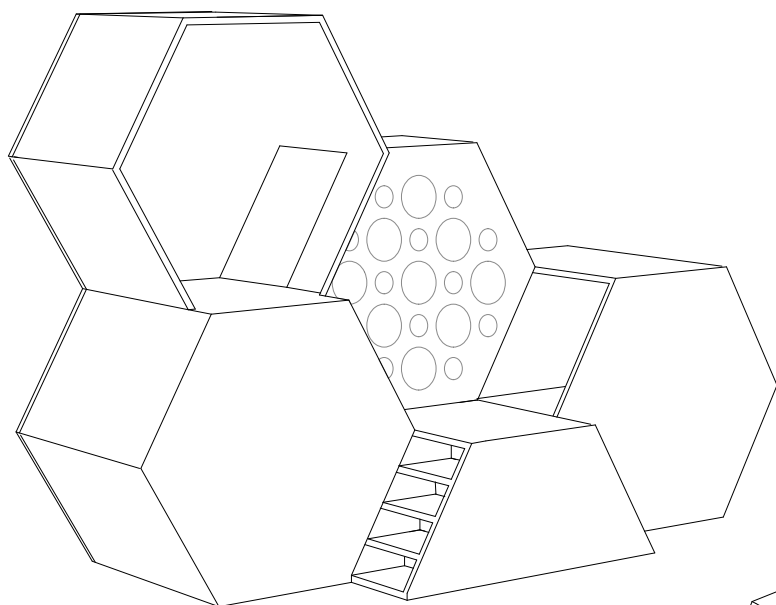
SUGERENCIA:
USAR PLYWOOD DE 1" PARA
QUE LAS PIEZAS DEL
HEXÁGONO FUNCIONEN
ESTRUCTURALMENTE



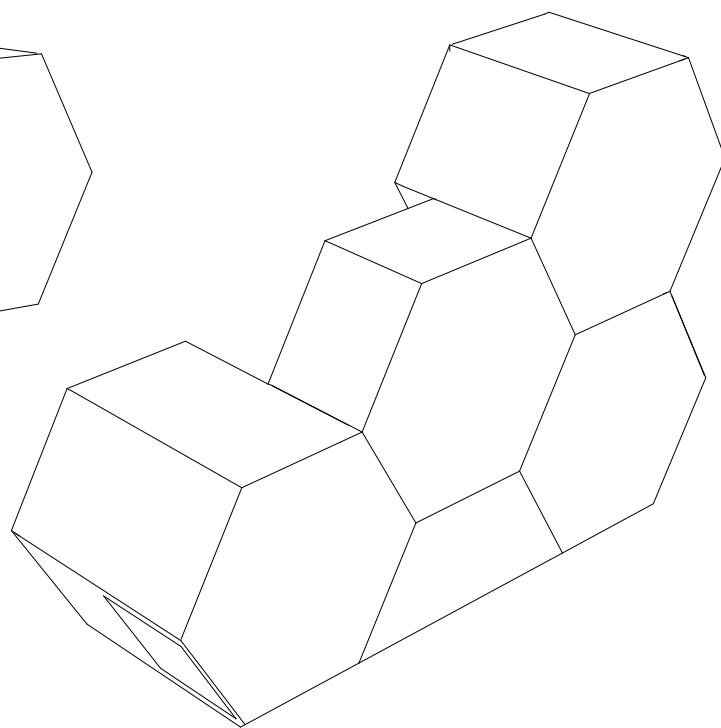
PERSPECTIVAS



PERSPECTIVA IZQUIERDA

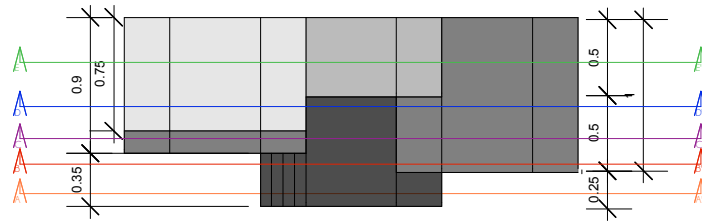


PERSPECTIVA DERECHA

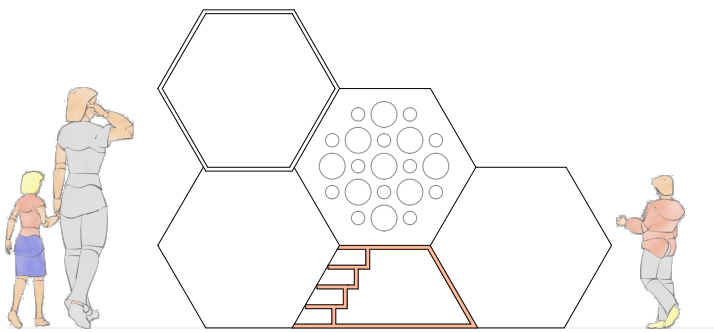


PERSPECTIVA TRASERA

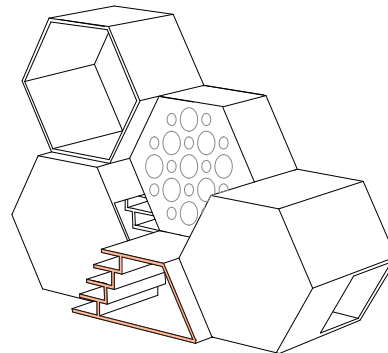
CORTES



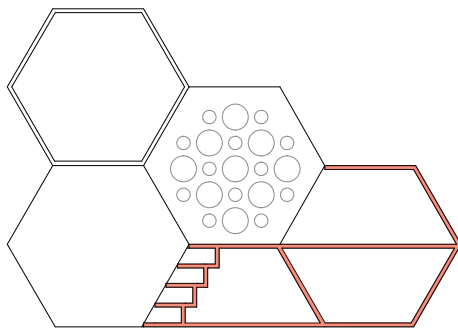
PLANTA
ESCALA 1:25



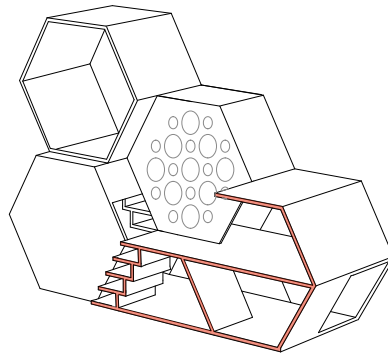
CORTE A-A'



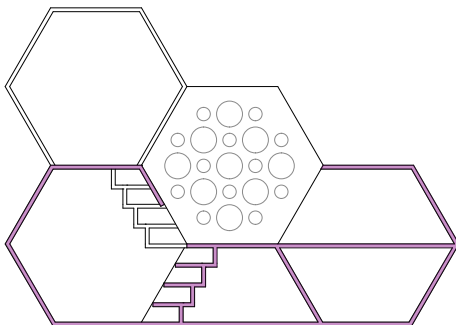
PERSPECTIVA CORTE A-A'



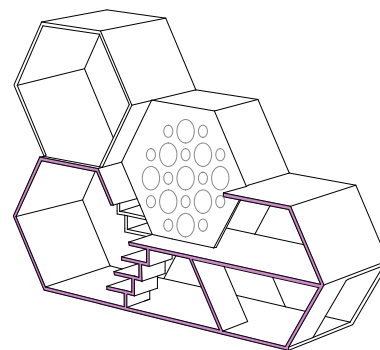
CORTE B-B'



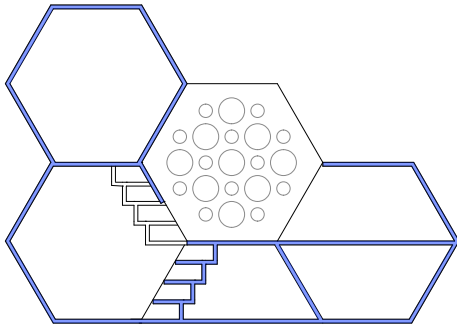
PERSPECTIVA CORTE B-B'



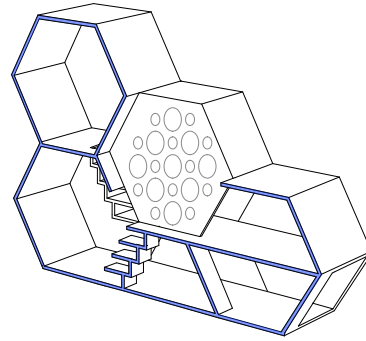
CORTE C-C'



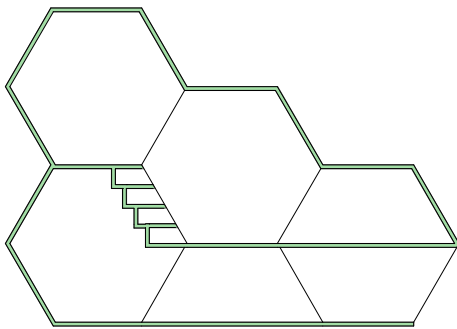
PERSPECTIVA CORTE C-C'



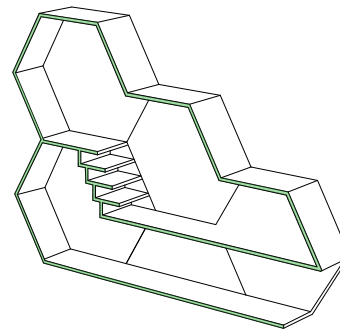
CORTE D-D'



PERSPECTIVA CORTE D-D'



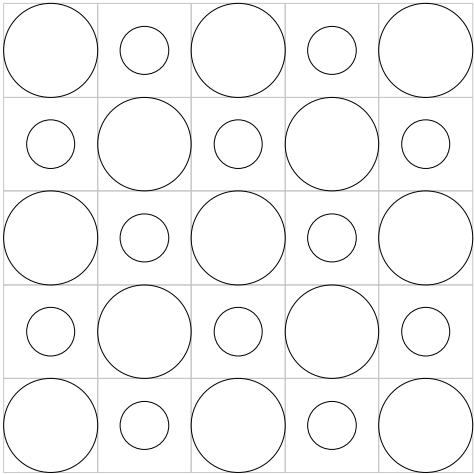
CORTE E-E'



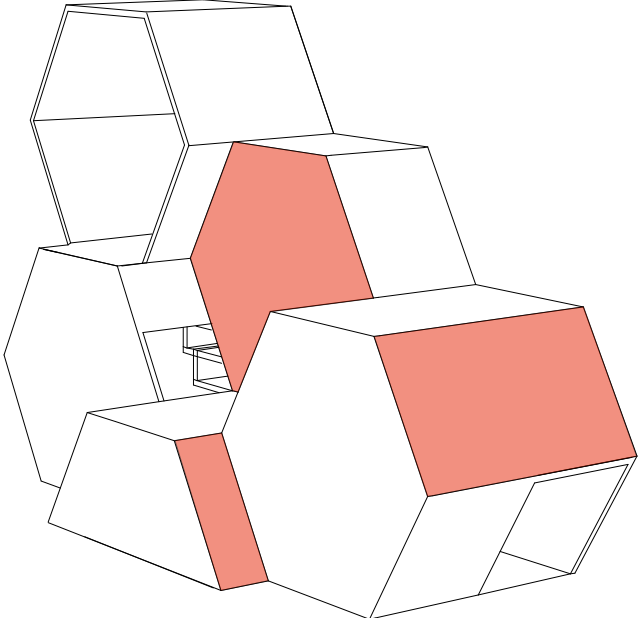
PERSPECTIVA CORTE E-E'

DETALLES ADICIONALES

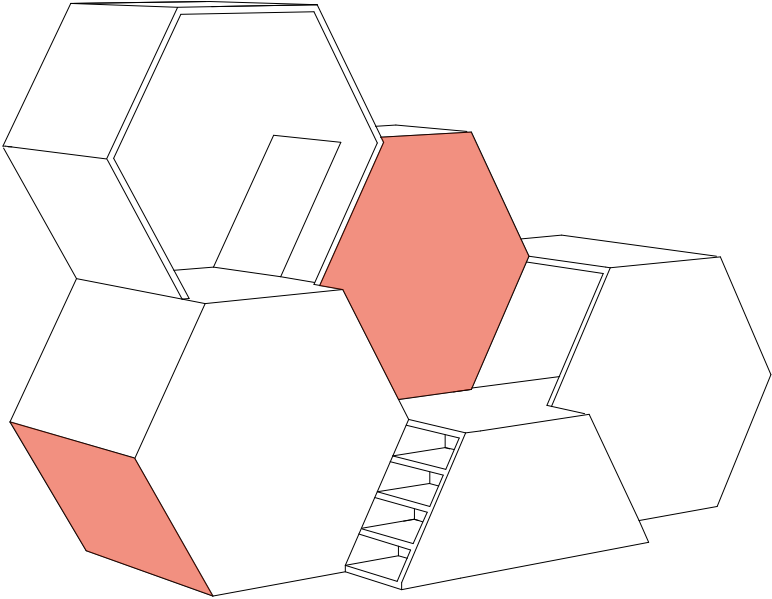
PATRÓN AGUJEROS



LOS AGUJEROS DEBEN IR EN TODAS LAS SUPERFICIES ROJAS, SIGUIENDO ESTE PATRÓN.
LAS MEDIDAS QUEDAN A DISCRECIÓN DEL CONSTRUCTOR



PERSPECTIVA IZQUIERDA



PERSPECTIVA DERECHA